

# CAD + CAM

// PREMIUM CAD & CAM SERVICES //

MASTERmilling  
CENTER

▶ **OUR TECHNOLOGY**   

We utilize the industry's most advanced 3D printers, milling equipment, and materials which along with our highly experienced master technicians, lead to unprecedented quality and turnaround standards.

# INDUSTRY



## **BRUXZIR® ANTERIOR**



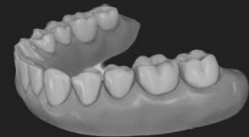
BruxZir® Anterior is a highly esthetic restorative material designed specifically to satisfy the esthetic and functional requirements of the anterior region of the mouth. Exhibiting an average flexural strength of 650 MPa with translucency and color similar to natural dentition, BruxZir Anterior is an ideal, esthetic solution for anterior cases.



## **KATANA**



Translucency isn't uniform in natural dentition, and natural, graduated opacity is available for the first time with Katana Anterior ST & UT. Because Katana is more opaque near the sulcus, it eliminates the grey coloration sometimes caused by overly translucent anterior zirconia. It's also durable enough to survive most indications.



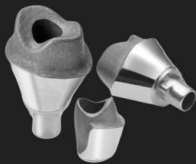
## **PRINTED RP MODELS**



We use top-tier 3D printers for our RP models. These printers create excellent anatomical details for more consistent end results.

# LEADING

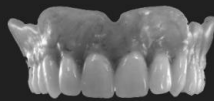
## CAD & CAM PRODUCTS



### CUSTOM ABUTMENTS



MMC can fabricate custom abutments for use with the industry's leading implant manufacturers. Our custom abutments are available in Titanium, Gold Hue, Cr-Co, or Pearl™ Zirconia.



### TALLADIUM LUMINESSE



Fabricated with cutting-edge CAD/CAM technology, the Talladium™ zirconia, milled from a solid disc, achieves a foundation of exceptional strength, increased durability, beautiful life-like results, and superior color characteristics.



### PRECISION-MILLED BARS



These incredibly strong prosthetic devices are custom fabricated and precisely milled from titanium, zirconia or chrome cobalt. We mill all materials on our industrial five-axis mills, and offer titanium nitride coating services for bars to further improve esthetics.

# CROWN & BRIDGE

THE NEW FACE OF DENTISTRY

## CAD PRODUCTS \ FEE SCHEDULE

<b>TALLADIUM™</b>	From Model	From STL File	<b>ZIRLUX® FC2</b>	From Model	From STL File
Full-Contour Single Unit	\$57	\$47	Full-Contour Single Unit	\$69	\$59
Full-Contour Bridge (per unit)	\$60	\$50	Full-Contour Bridge (per unit)	\$73	\$63
Coping	\$35	\$27	Coping	\$49	\$39
Coping Framework (per unit)	\$37	\$30	Coping Framework (per unit)	\$53	\$43
<b>BRUXZIR®</b>			<b>IVOCLAR®</b>		
Full-Contour Single Unit	\$69	\$59	IPS e.max® Milled Single Unit	\$59	\$49
Full-Contour Bridge (per unit)	\$73	\$63	IPS e.max® Milled Bridge (up to 3 units)	\$69	\$59
Coping	\$49	\$39	Empress® Milled Single Unit	\$49	\$39
Coping Framework (per unit)	\$53	\$43			
<b>KATANA™ MULTI-LAYERED</b>			<b>LAVA™</b>		
Full-Contour Single Unit	\$71	\$61	Lava Plus Full-Contour/Coping	\$71	\$61
Full-Contour Bridge (per unit)	\$76	\$66	Lava Plus Full-Contour Bridge and/or framework (per unit)	\$76	\$66
<b>KATANA™ ANTERIOR ST</b>			<b>NON-PRECIOUS/CR-CO</b>		
Full-Contour Single Unit	\$71	\$61	Milled Single Unit	\$29	\$23
Full-Contour Bridge (per unit)	\$76	\$66	Milled Framework (per unit)	\$32	\$26
<b>TITANIUM</b>			<b>TEMPORARIES/PROVISIONALS</b>		
Single Unit	\$45	\$30	PMMA	\$21	\$17
Framework (per unit)	\$48	\$33	Bitesplints Clear	\$85	\$65

## PRINTED MODELS & COPINGS

<b>RP MODELS</b>	Unprepared Raw STL	Prepared STL/DCM	<b>WAX PRINT/MILLED</b>	From Model	From STL File
Quadrant (upper and lower with one die)	\$25	\$20	Coping(s)	\$15	\$5
Full-Arch (upper & lower with one die)	\$30	\$25	Full-Contour	\$20	\$10
Each additional die	\$1.50	\$1.50			

# IMPLANTS

UNBEATABLE QUALITY

## CAD PRODUCTS \ FEE SCHEDULE

### CUSTOM ABUTMENTS

	From Model	From STL File
Titanium or Cr-Co	\$151	\$131
Ti Gold Hue Abutment	\$171	\$151
Zirconia	\$151	\$131
Gold Hue/Ti	\$20	\$20
Scanning Locator N/A	N/A	\$35
Titanium Chairside Locator	N/A	\$50
Scanning Locator Screw	N/A	\$15

### BARS

Titanium (starting at)	\$875	\$775
Hybrid Titanium	\$825	\$725

Additional fees may apply for locators, screws, attachments, steep implant angles, undercuts, special interfaces, and polish.

### PRE-MILLED INTERFACE

BioHorizons Laser-Lok Titanium	\$161	\$140
BioHorizons Laser-Lok Zirconia	\$181	\$169
Neoss Titanium	\$175	\$160
Neoss Zirconia	\$195	\$180
Neoss Scanning Locator	N/A	\$90
Neoss Screw	N/A	\$30

### SCREW RETAINED BRIDGES

Temp (temp interface)	\$41	\$37
Temp/Ti interface (per interface)	\$71	\$67
Titanium (per interface)	\$131	N/A
Cr-Co (per interface)	\$131	N/A
Zirconia (per interface)	\$151	N/A
+ Final Restorative Options		
Temp	\$21	\$17
Ti/Cr-Co Framework (per unit)	\$49	N/A
Zirconia Coping Framework (per unit)	\$63	N/A
Full-Contour Zirconia bridge (per unit)	\$73	N/A
Stain and Glaze	\$100	N/A
Pink Porcelain	\$200	N/A

"WE PRIDE OURSELVES IN PROVIDING THE **HIGHEST QUALITY** CAD/CAM SERVICES ON THE MARKET TODAY!"





# MASTERmilling CENTER



1303 North San Fernando Boulevard,  
Suite #201 Burbank, CA 91504



(818) 561-4727



Email: [contact@master-milling.com](mailto:contact@master-milling.com)



[master-milling.com](http://master-milling.com)



MASTER-MILLING.COM